

Orthoptera – rovnokřídlí

A close-up photograph of a green grasshopper (Orthoptera) resting on a green leaf. The grasshopper's head and thorax are the central focus, showing its large eyes, antennae, and mouthparts. The background is a blurred green leaf, and the overall lighting is bright, highlighting the texture of the insect's body and the leaf.

Připravil doc. RNDr. Oldřich
Nedvěd, CSc., PřF JU

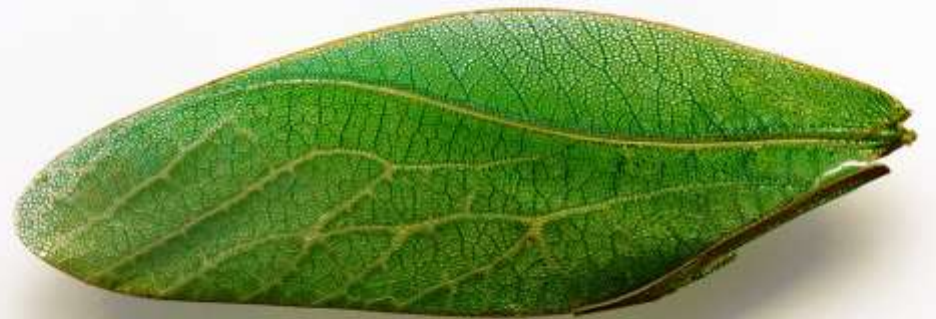
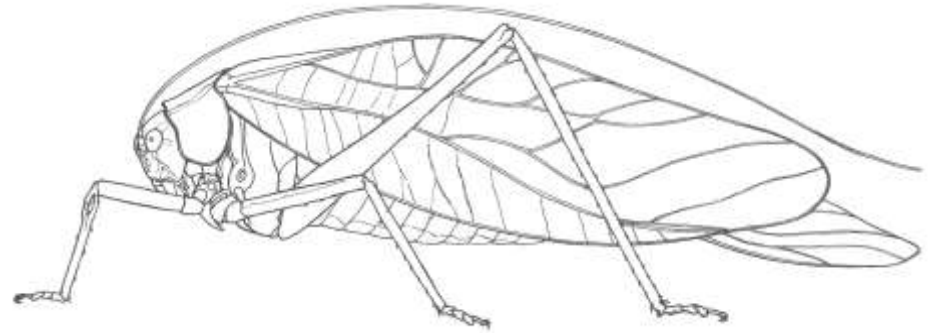
charakteristika

- Velké tělo
- Hypognátní hlava
- Malé vypouklé oči
- Nitkovitá tykadla
- Kousací ústní ustrojí
- Sedlovitá předohrud', 2, 3
- Prodloužené zadní nohy
- Hranatý zadeček, cerci
- Přední křídla zesílená
- Hustá křídelní žilnatina
- Stridulace, tympanum



charakteristika

- wing



diverzita

- celosvětově: 27 000 druhů
 - čeledí
 - Ensifera 2000
 - Califera 2000
- CZ+SK: 97 druhů
 - 8 čeledí



klasifikace

Orthoptera

- Ensifera
 - **Tettigonoidea**
 - Hagloidea
 - **Rhaphidiophoroidea**
 - Schizodactyloidea
 - Stenopelmatoidea
 - **Grylloidea**
- Caelifera
 - **Tridactyloidea**
 - **Acridoidea**
 - Eumastacoidea
 - Pneumoroidea
 - Pyrgomorphoidea
 - Tanaoceroidea
 - **Tetrigoidea**
 - Trigonopterygoidea

klasifikace

Tettigoniidea

- Phaneropterinae
- Conocephalinae
- Bradyporinae
- Tettigoniinae

Grylloidea

- Gryllidae – true crickets
- Gryllotalpidae – mole crickets
- Myrmecophilidae – ant crickets

• **Acridoidea**

- Acrididae - grasshoppers

• **Tetrigoidea**

- Tetrigidae

• **Tridactyloidea**

- Tridactylidae

Rhaphidiophoridae

- Weta, cave cricket
- Australia, New Zealand
- In darkness
- Long antennae and legs
- Often wingless



Tettigoniidae

- cylindrical body
- Vertical head
- long antennae
- Laterally flattened pronotum
- Short cerci
- Flattened ovipositor
- Long hind femora
- Tegmina, straight wings



Gryllidae

- Wide cylindrical body
- round head
- long antennae
- robust pronotum
- long cerci
- long, cylindrical ovipositor
- Large hind femora
- Tegmina, folded wings



Gryllotalpidae

- Large body
- Small eyes
- shovel-like forelimbs
- Short hind limbs
- Very hard prothorax
- No ovipositor
- Long cerci
- Short antennae
- Omnivores
- Stridulation: exponential horn
- 1. wing short
- 2. wing exposed, foded



Myrmecophilidae

- inquilines within ant nests
- very small, wide
- Wingless
- yellow, brown, or nearly black
- No tympanal organs
- Long cerci



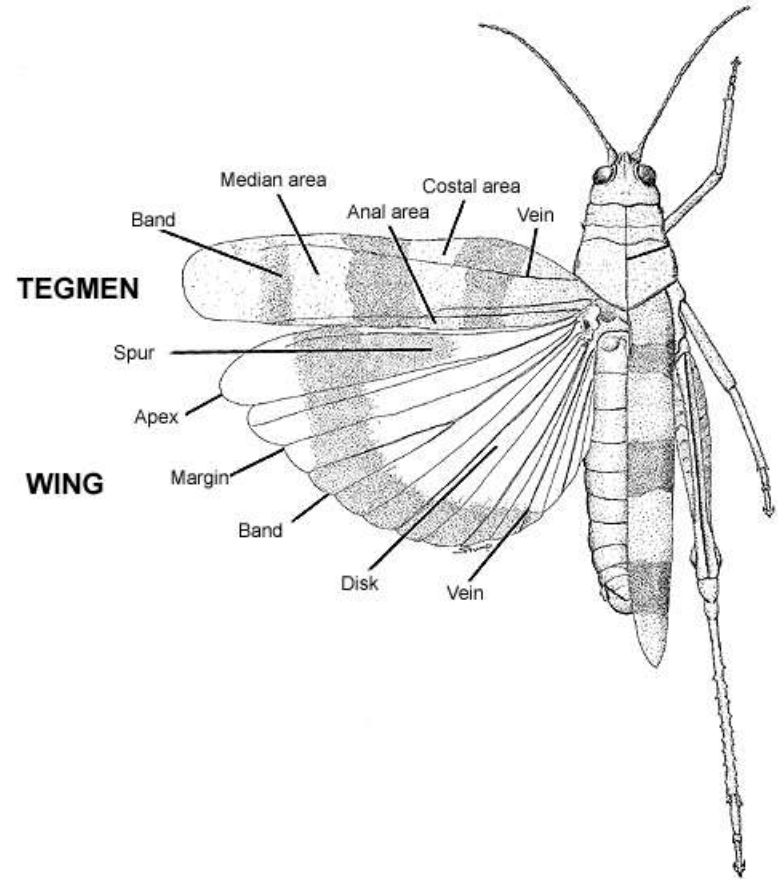
Acrididae

- Phytophagous
- Short cerci
- Short ovipositor
- Short antennae
- Large 3. legs
- Overwintering eggs



Acrididae

- Short wings



Tetrigidae

- Phytophagous
- Short cerci
- Short ovipositor
- Short antennae
- Large 3. legs
- Very long pronotum
- Overwintering adults



Tridactylidae

- Small
- Very short antennae
- Long cerci
- Ovipositor
- Large 3. legs
- Digging 1., 2. legs
- Hard head
- Short tegmina
- Long wings



Orthoptera

- *Aiolopus thalassinus*
- *Tetrix bipunctata*
- *Euchorthippus declivus*
- *Chrysochraon dispar*
- *Chorthippus albomarginatus*
- *Chorthippus brunneus*
- *Chorthippus biguttulus*
- *Oedipoda coerulescens*
- *Chorthippus parallelus*
- *Ruspocia nitidula*
- *Phaneroptera nana*
- *Oecanthus pellucens*
- *Phaneroptera falcata*
- *Isophya* sp.
- *Myrmecophila*